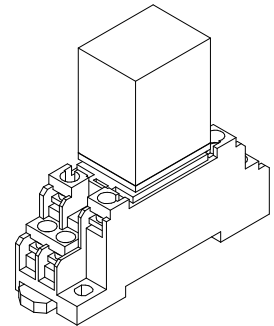
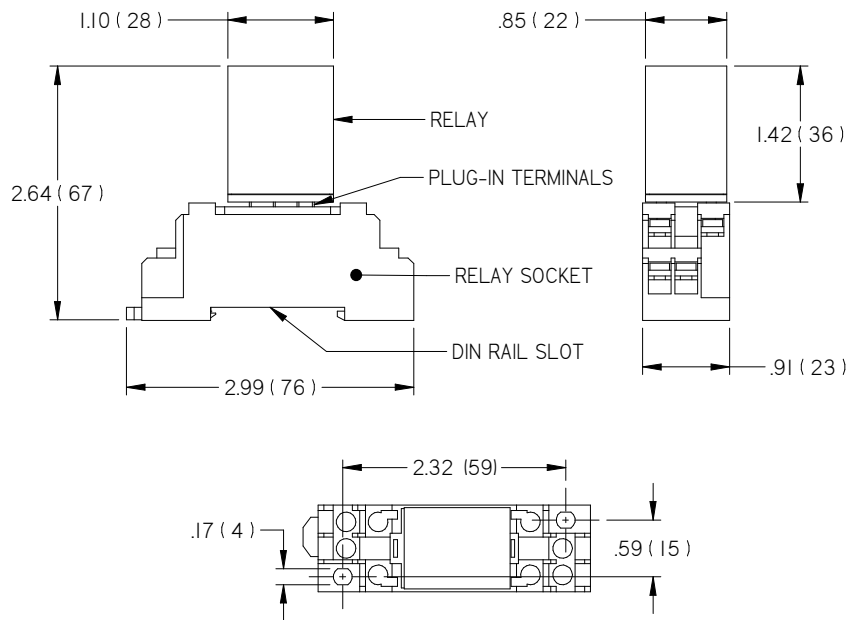


RELAY

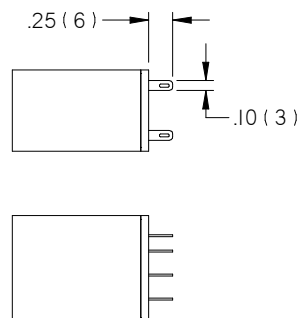
SPECIFICATIONS:	
ENVIRONMENTAL (OPERATING)	-130°F to 160°F (-55°C to 70°C), 5% to 85% R.H.(NON-CONDENSING)
SOCKET RATING	250VAC MAX, 7.0A MAX
CONTACT RATING	5.0A @ 220VAC RESISTIVE LOAD 2.0A @ 220VAC INDUCTIVE LOAD 250VAC MAX, 5.0A MAX
COIL RATING	250VAC @ 46mA (60 Hz)
MOUNTING	RELAY: 8 PLUG-IN TERMINALS, DPDT CONFIGURATION SOCKET: DIN RAIL MOUNT OR FOOT MOUNT
RELAY RATING	UL, CSA RATED



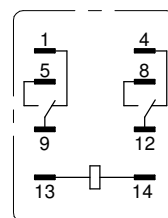
DIMENSIONS:



TERMINATION:



**INTERNAL CONNECTIONS
BOTTOM VIEW**



ALL METRIC DIMENSIONS () ARE SOFT CONVERTED. IMPERIAL DIMENSIONS ARE CONVERTED TO METRIC AND ROUNDED TO THE NEAREST MILLIMETER. SPECIFICATIONS ARE SUBJECT TO CHANGE WITHOUT NOTICE.