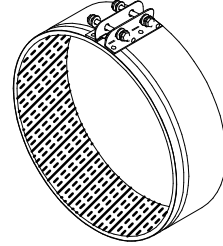


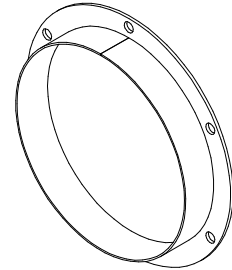
DRAWBAND CLAMP (DBC)

DBC SPECIFICATIONS:	
BAND	3.5in. WIDTH, 24 Ga GALVANIZED STEEL
FOAM	0.25in., UL 94, ELASTOMERIC
HARDWARE	BOLT AND LOCK NUTS
VALVE COMPANION SIZES	108, 110, 112, 114
VALVE COMPANION TYPE	SLIP

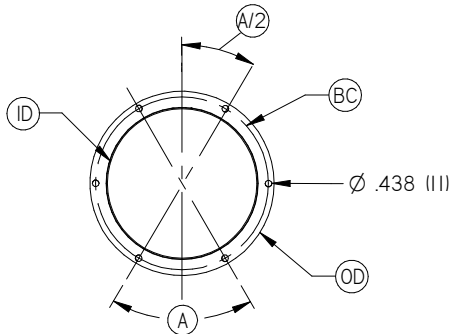


COMPANION FLANGE (CFL)

CFL SPECIFICATIONS:	
MATERIAL	SEE MATERIAL OPTIONS BELOW
HARDWARE	NOT INCLUDED
VALVE COMPANION SIZES	108, 110, 112, 114
VALVE COMPANION TYPE	SLIP



DIMENSIONS:



UNIT SIZE	NUMBER OF BOLT HOLES	BC	OD	A	ID (MAX DUCT OD)
		in. (mm)	in. (mm)	Degrees	in. (mm)
8	6	Ø 9.25" (235)	Ø 10" (254)	60	Ø 8.25" (210)
10	6	Ø 11.25" (286)	Ø 12" (305)	60	Ø 10.25" (260)
12	6	Ø 13.25" (337)	Ø 15" (381)	60	Ø 12.25" (311)
14	8	Ø 15.75" (400)	Ø 17" (432)	45	Ø 14.25" (362)

COMPANION FLANGE MATERIAL OPTIONS:

- ALUMINUM (AL)
- 316 STAINLESS STEEL (SS)

NOTE: PLEASE REFER TO VV MANUAL FOR INSTALLATION INSTRUCTIONS.
SEE PROJECT SUBMITTAL SCHEDULE FOR SELECTED OPTIONS.

ALL METRIC DIMENSIONS () ARE SOFT CONVERTED. IMPERIAL DIMENSIONS ARE CONVERTED TO METRIC AND ROUNDED TO THE NEAREST MILLIMETER.
SPECIFICATIONS ARE SUBJECT TO CHANGE WITHOUT NOTICE.